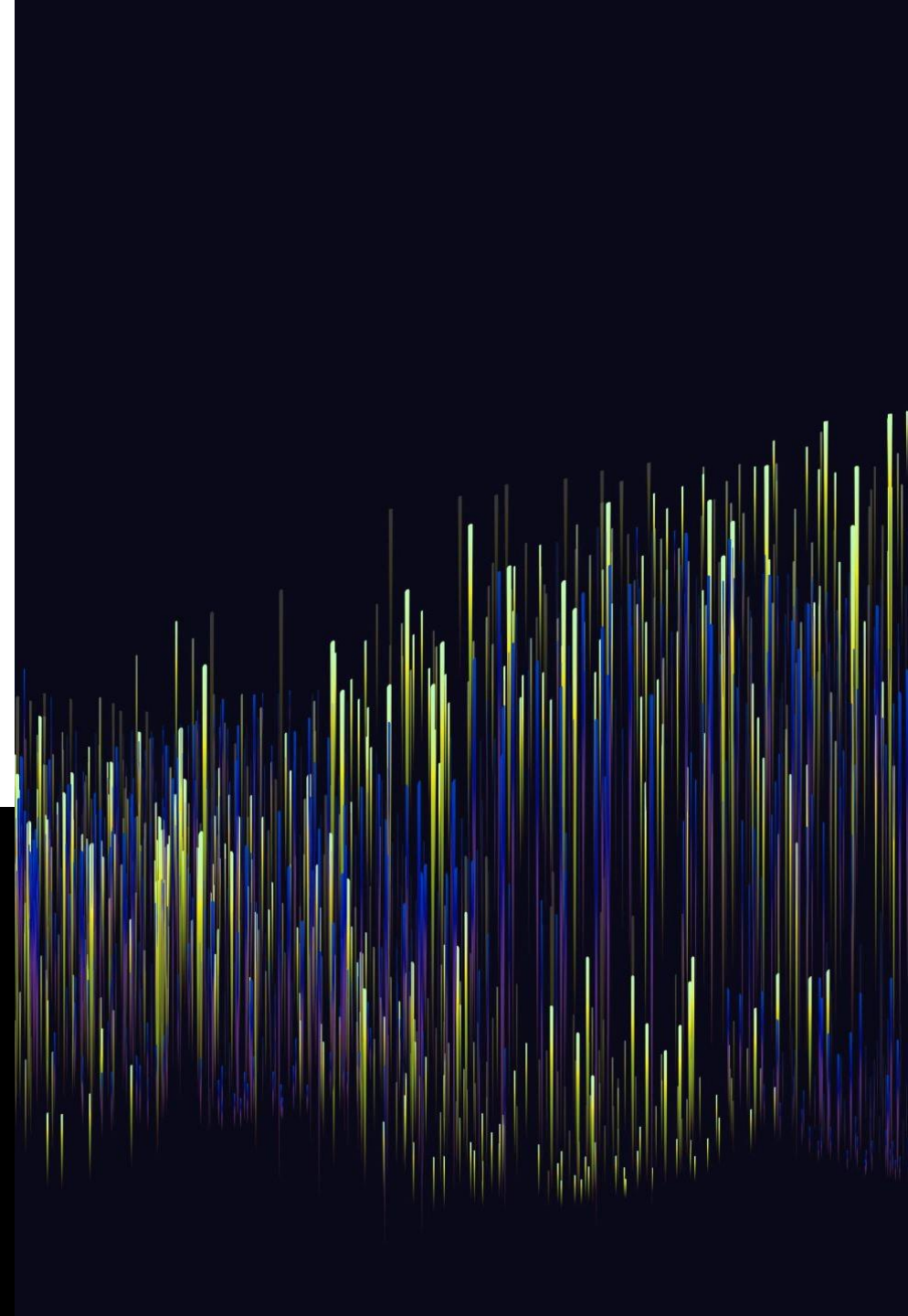


TRANSFORMATION OF ENERGY -- TAROT

**An Intuitive Study of
Introspection Using Astrology,
Tarot and Personal Divination**



Focus each week focus on the following and be prepared to share some of your 'intuitive findings' (from Tarot, 3 card draws) in your 'break out groups'. Each person has a minimum of 5 minutes each to share, including the facilitators and helpers. Focus on ONE QUESTION based on the questions I sent you, and draw the cards as explained in this slide presentation. (If you do not have Angeles book, as recommended, please use the Tarot sheet I have included.)

YOUR ENERGY AND THE LEVEL OF YOUR ENERGY IS DETERMINED BY YOUR INNER WORK ON THESE CONNECTIONS.

The tarot Soul and Persona Card(s) will be your Affirmations. Based on your birth data.

First week and 2nd week:

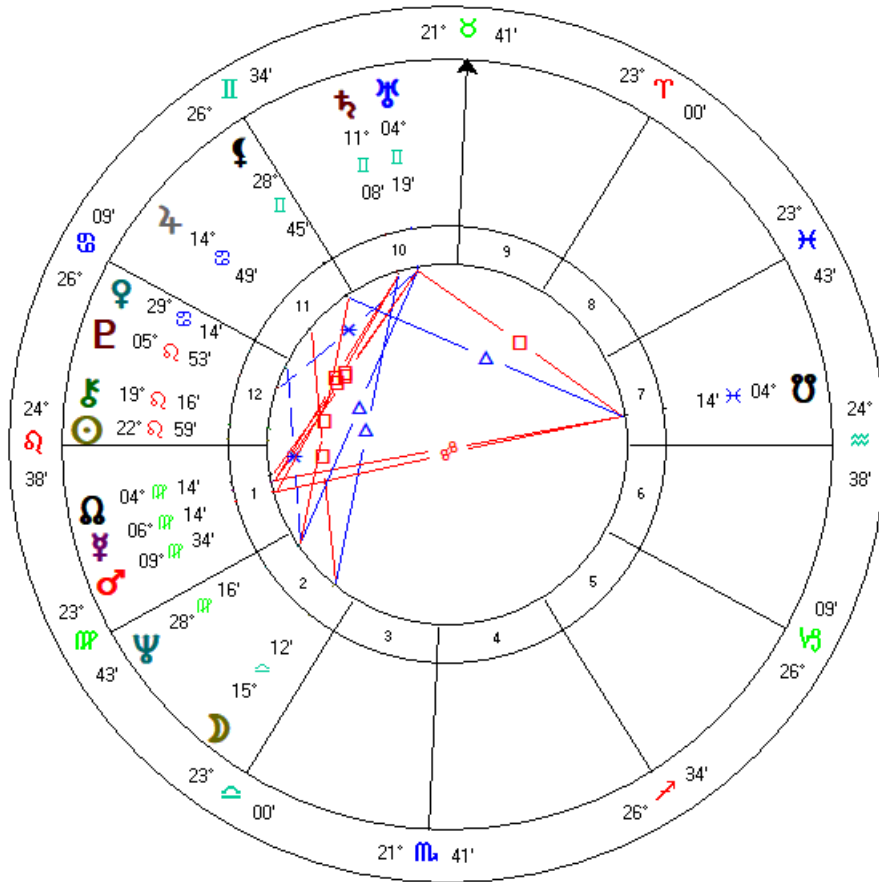
Important aspects to Sun, Ascendant and Moon. How is your chart set up to handle your energy, regarding healing inner and external wounds? (This will be handled both Weeks 1 and 2 because the 1st weeks questions have to do with the way you see yourself.)

- I. Qualities of aspects affecting the 1st, 4th, 7th and 10th houses (the most active houses when reading a chart.
 1. Self/self 2ND week.
 2. 4th family roots and genetics
 3. 7th house Relationships, partnerships, shadow of self
 4. 10th house --- personal authority, recognition, handling manifested energies.

Weeks 3, 4 and 5.

- I. Qualities of guidance, healing, gifts and service within the chart aspects from higher sources. Trines, sextiles and conjunctions of outer planets and nodes. Week 6.

Gwynne Mayer
Natal Chart
Aug 16 1942, Sun
7:14 am CWT +5:00
San Antonio, Texas
29°N25'26" 098°W29'36"
Geocentric
Tropical
Koch
True Node



Question(s) for Week 1 —

What do you need to do to activate your healing energies?

(12th house Sun/Chiron on Ascendant being inconjunct Pluto.)

How do you nurture yourself in this immediate transformative environment? (Moon in 2nd house in Libra in mutual reception to Venus conjunct Pluto, demanding intimacy and quality of space.)

How do you involve your relationship in communication with your partner? (all of the above active aspects. Very intense demands on partnerships.)

Question for Week 2 – considering the very important above?

How do I see myself presenting to others? How do others see me?

Tarot Signature:

Persona — Fool #0 (22)

Soul — Emperor #4

Affirmations for my Personality/Ascendant —



How do you involve your relationship in communication with your partner? (all of the above active aspects. Very intense demands on partnerships.)

Gwynne's question: How do I respond now to intimate relationships?

For our 3 card tarot draws which gives us specific information for specific questions based on investigating each question. (You create a question that is specific to your situation and make sure it is NOT A YES OR NO, but instead, HOW, WHY, DESCRIBE, ETC. Oftentimes, the cards will lead you to another question. Sometimes I have 4 questions off of my original question for more clarification.

You draw these three cards, as shown.
From left to right, they stand for the following:

1st card — immediate past 24 hours relating to question.

2nd card — the NOW

3rd card — the immediate future.



How do you involve your relationship in communication with your partner? (all of the above active aspects. Very intense demands on partnerships.)

How have I responded to my intimate relationship in immediate past?

3 of Wands – My energy (wands) is completing a cycle and is ready for something new to come in. (also been married 3 times for a total of 33 years.)



How do you involve your relationship in communication with your partner? (all of the above active aspects. Very intense demands on partnerships.)

How have I responded to my intimate relationship in the NOW?

Knight of Cups — tied to loyalty and ability to give and take openly without ego involvement at a feeling level.



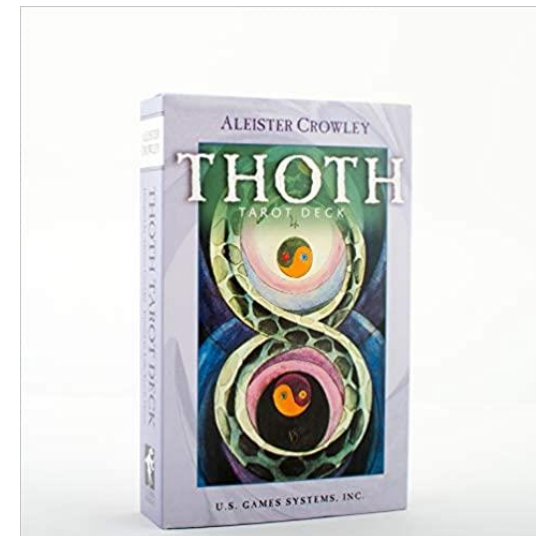
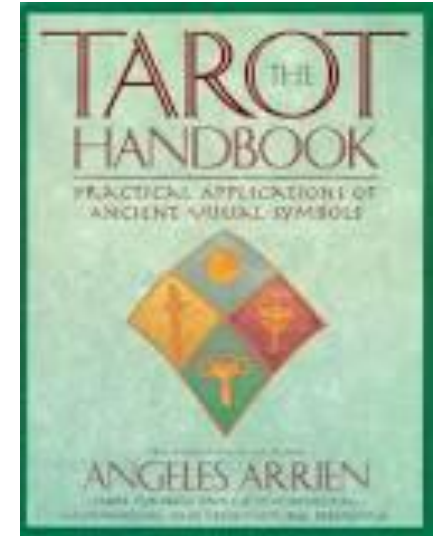
How do you involve your relationship in communication with your partner? (all of the above active aspects. Very intense demands on partnerships.)

How have I responded to my intimate relationship in the immediate future?

Knight of Disks — tied to physical health and ability to stay with healthy routine within the relationship.

If you do not have the following book to follow, please see the next two slides for more information on the cards you draw. My recommendations for your cards and book are the following but you can use whichever you are most familiar.

Astrological — Book COSMIC SCIENCE
And the word document I have sent to you created templates by Susanne.



Major Arcana				
0 The Fool <i>Beginnings</i>	I Magician <i>Power, Action</i>	II High Priestess <i>Mystery, Intuition</i>	III Empress <i>Femininity, Beauty</i>	IV Emperor <i>Structure, Solidarity</i>
V Hierophant <i>Tradition, Belief</i>	VI Lovers <i>Love, Union</i>	VII Chariot <i>Control, Willpower</i>	VIII Strength <i>Strength, Courage</i>	IX Hermit <i>Introspection</i>
X Wheel of Fortune <i>Karma, Destiny</i>	XI Justice <i>Truth, Justice</i>	XII Hanged Man <i>Sacrifice</i>	XIII Death <i>Transition</i>	XIV Temperance <i>Balance, Purpose</i>
XV Devil <i>Bondage, Addiction</i>	XVI Tower <i>Disaster, Upheaval</i>	XVII Star <i>Hope, Renewal</i>	XVIII Moon <i>Illusion, Fear</i>	XIX Sun <i>Warmth, Vitality</i>
	XX Judgment <i>Absolution</i>		XXI World <i>Completion, Travel</i>	

Minor Arcana				
	Swords <i>Air, Reason</i>	Wands <i>Fire, Creativity</i>	Cups <i>Water, Emotion</i>	Pentacles <i>Earth, Material</i>
Ace <i>Potential</i>	<i>Power, Victory, Clarity</i>	<i>Inspiration, Creation</i>	<i>Compassion, Intimacy</i>	<i>Manifestation, Prosperity</i>
Two <i>Duality</i>	<i>Choice, Stalemate</i>	<i>Progress, Discovery</i>	<i>Partnership, Attraction</i>	<i>Balance, Adaptability</i>
Three <i>Communication</i>	<i>Heartbreak, Separation, Grief</i>	<i>Preparation, Foresight</i>	<i>Friendship, Community</i>	<i>Teamwork, Collaboration</i>
Four <i>Stability</i>	<i>Recuperation, Passivity, Rest</i>	<i>Harmony, Home, Marriage</i>	<i>Contemplation, Apathy</i>	<i>Stability, Security</i>
Five <i>Adversity</i>	<i>Conflict, Tension, Defeat</i>	<i>Disagreement, Strife</i>	<i>Loss, Regret, Bereavement</i>	<i>Insecurity, Poverty, Worry</i>
Six <i>Growth</i>	<i>Transition, Rite of Passage</i>	<i>Self-Confidence, Progress</i>	<i>Innocence, Nostalgia</i>	<i>Generosity, Charity, Giving</i>
Seven <i>Faith</i>	<i>Betrayal, Deception</i>	<i>Competition, Perseverance</i>	<i>Illusion, Fantasy, Imagination</i>	<i>Profit, Vision, Investment</i>
Eight <i>Change</i>	<i>Isolation, Imprisonment</i>	<i>Travel, Change, Movement</i>	<i>Escapism, Disappointment</i>	<i>Education, Engagement</i>
Nine <i>Fruition</i>	<i>Depression, Anxiety, Despair</i>	<i>Resilience, Persistence</i>	<i>Comfort, Satisfaction</i>	<i>Gratitude, Luxury</i>
Ten <i>Completion</i>	<i>Defeat, Loss, Crisis</i>	<i>Burden, Responsibility</i>	<i>Happiness, Alignment</i>	<i>Wealth, Establishment</i>
Page <i>Messages</i>	<i>Curious, Energetic</i>	<i>Enthusiastic, Discovery</i>	<i>Synchronicity, Creative</i>	<i>Manifestation, New Enterprise</i>
Knight <i>Motion</i>	<i>Opinionated, Hasty</i>	<i>Energy, Passion, Lust, Adventure</i>	<i>Romantic, Charming</i>	<i>Efficient, Routine-Oriented</i>
Queen <i>Influence</i>	<i>Quick Thinker, Perceptive</i>	<i>Exuberance, Vibrancy</i>	<i>Calm, Intuitive, Compassionate</i>	<i>Down-to-Earth, Motherly</i>
King <i>Authority</i>	<i>Clear Thinking, Intellectual</i>	<i>Visionary, Entrepreneur</i>	<i>Emotionally-Balanced</i>	<i>Disciplined, Controlling</i>

	WANDS	CUPS	SWORDS	PENTACLES
ACE	Creative Force Enthusiasm Confidence Courage	Emotional Force Intuition Intimacy Love	Mental Force Truth Justice Fortitude	Material Force Prosperity Practicality Trust
TWO	Personal Power Boldness Originality	Connection Truce Attraction	Blocked Emotions Avoidance Stalemate	Juggling Flexibility Fun
THREE	Exploration Foresight Leadership	Exuberance Friendship Community	Heartbreak Loneliness Betrayal	Teamwork Planning Competence
FOUR	Celebration Freedom Excitement	Self-Absorption Apathy Going Within	Rest Contemplation Quiet Preparation	Possessiveness Control Blocked Change
FIVE	Disagreement Competition Hassles	Loss Bereavement Regret	Self-Interest Discord Open Dishonor	Hard Times Ill Health Rejection
SIX	Triumph Acclaim Pride	Good Will Innocence Childhood	The Blues Recovery Travel	Having/Not Having: Resources Knowledge Power
SEVEN	Aggression Defiance Conviction	Wishful Thinking Options Dissipation	Running Away Lone-Wolf Style Hidden Dishonor	Assessment Reward Direction Change
EIGHT	Quick Action Conclusion News	Deeper Meaning Moving On Weariness	Restriction Confusion Powerlessness	Diligence Knowledge Detail
NINE	Defensiveness Perseverance Stamina	Wish Fulfillment Satisfaction Sensual Pleasure	Worry Guilt Anguish	Discipline Self-Reliance Refinement
TEN	Overextending Burdens Struggle	Joy Peace Family	Bottoming Out Victim Mentality Martyrdom	Affluence Permanence Convention

Minor Arcana

	Swords (Air; Reason)	Wands (Fire; Creativity)	Cups (Water; Emotion)	Pentacles (Earth; Material)
Ace Potential	Power, Victory, Clarity	Inspiration, Creation	Compassion, Intimacy	Manifestation, Prosperity
Two Duality	Choice, Stalemate	Progress, Discovery	Partnership, Attraction	Balance, Adaptability
Three Communication	Heartbreak, Separation, Grief	Preparation, Foresight	Friendship, Community	Teamwork, Collaboration
Four Stability	Recuperation, Passivity, Rest	Harmony, Home, Marriage	Contemplation, Apathy	Stability, Security
Five Adversity	Conflict, Tension, Defeat	Disagreement, Strife	Loss, Regret, Bereavement	Insecurity, Poverty, Worry
Six Growth	Transition, Rite of Passage	Self-confidence, Progress	Innocence, Nostalgia	Generosity, Charity, Giving
Seven Faith	Betrayal, Deception	Competition, Perseverance	Illusion, Fantasy, Imagination	Profit, Vision, Investment
Eight Change	Isolation, Imprisonment	Travel, Change, Movement	Escapism, Disappointment	Education, Engagement
Nine Fruition	Depression, Anxiety, Despair	Resilience, Persistence	Comfort, Satisfaction	Gratitude, Luxury
Ten Completion	Defeat, Loss, Crisis	Burden, Responsibility	Happiness, Alignment	Wealth, Establishment
Page Messages	Curious, Energetic	Enthusiastic, Discovery	Synchronicity, Creative	Manifestation, New Enterprise
Knight Motion	Opinionated, Hasty	Energy, Passion, Lust, Adventure	Romantic, Charming	Efficient, Routine-Oriented
Queen Influence	Quick thinker, Perceptive	Exuberance, Vibrancy	Calm, Intuitive, Compassionate	Down-to-Earth, Motherly
King Authority	Clear-thinking, Intellectual	Visionary, Entrepreneur	Emotionally- balanced	Disciplined, Controlling