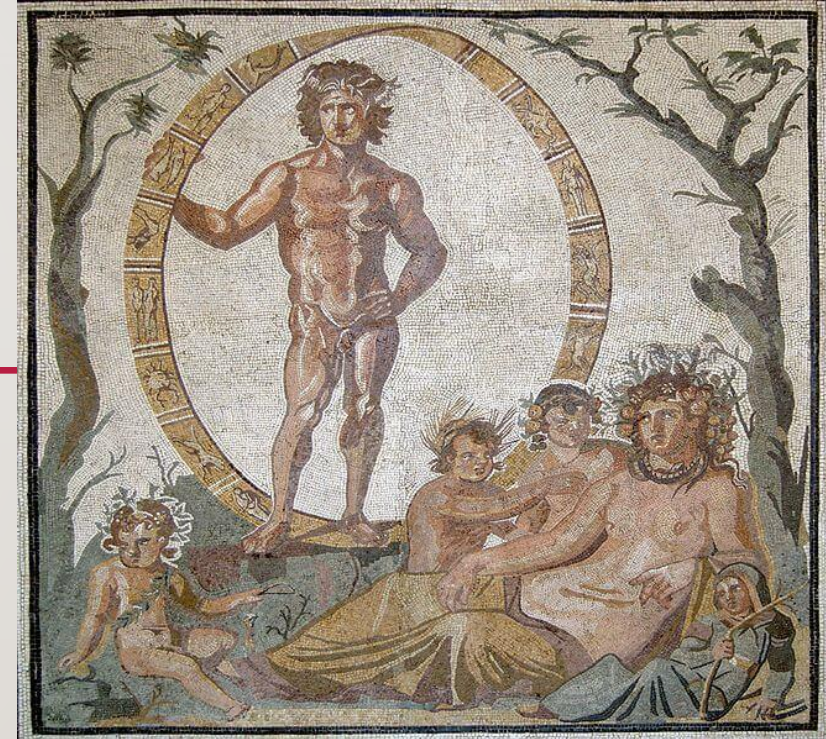


SPIRITUAL EVOLUTIONARY ASTROLOGY

STUDY OF URANUS NODES, URANUS PLACEMENT



We must look at the individual meaning of the following:

Uranus placement in chart

Uranus Nodes placement in chart

South Node Sagittarius which house is this in?

Ruler North Node which house?

North node Gemini:

Which house is Mercury in?

AQUARIUS
January 20 - February 18

Symbol: Water Bearer
Ruling Planet: Uranus & Saturn
House Ruled: Eleventh

Element: Air
Mode: Fixed
Keyword: "Network"

Aquarians have a rebellious nature, and are eccentric, spontaneous and original. They are forward thinking and innovative. Aquarians are scientifically minded and logical, and confident in manner. They can appear to be emotionally detached, yet they truly value social contact, and the spirit of humanity.

ASTROGRAPH

Uranus Meaning in a chart:

Astrology sign



URANUS

#135602014

Saturn:

In accordance with the theory of reincarnation, during our present life we have to face problems and situations originating from the mistakes made in other lives, which we now have to get over, as an act of appeal, since we have failed on the first trial. It is obvious that all these trials will be connected to the field where we have accumulated errors of choice or of behavior.

Therefore, through our natal chart, it is possible to realize not only the behavior and lifestyle we had before, but also the extent and the nature of karmic debts we have accumulated, which we should pay during current life so as to proceed correctly in the evolutionary way.

For this purpose, in addition to the position of Lunar Nodes and Retrograde Planets, the planet Saturn is of the main importance as it is able to express properly the meaning of "karma", because of its symbolism related to trials, obstacles and deprivations we undergo. The Saturn position in the natal chart will then provide important indications about the best way to follow, in order to get out of debts taken by each of us during previous lives.



Pluto:

Pluto symbolizes opposite forces: both the darkness and the self-hate within us, as well as the light of Truth within us which dispels darkness and heals unconsciousness. Pluto's natal aspects point to psychological arenas in which we meet the dark within us, and can become very alert and awake through this encounter. The most pleasant and easy life (some would say karma) would involve a *lack* of major Pluto aspects (and difficult eighth house placements) in the birthchart. Having major Pluto aspects (or difficult eighth house placements) in a birth chart does not symbolize a life of psychological ease, but does offer the possibility for a radical healing, awakening, and releasing of very ancient baggage. It is only through facing the difficult elements of ourselves which Pluto brings to the surface, that we might actually heal ourselves and our planet.



Internet links to where the meaning of each of these, Moon, Saturn and Pluto is in each house/sign:

Moon:

<https://cafeastrology.com/natal/mooninhouses.html>

<https://cafeastrology.com/articles/mooninsigns.html>

Saturn:

<https://cafeastrology.com/articles/saturninhouses.html>

<http://www.alwaysastrology.com/saturn-signs.html>

Pluto:

<https://cafeastrology.com/articles/plutoinhouses.html>

