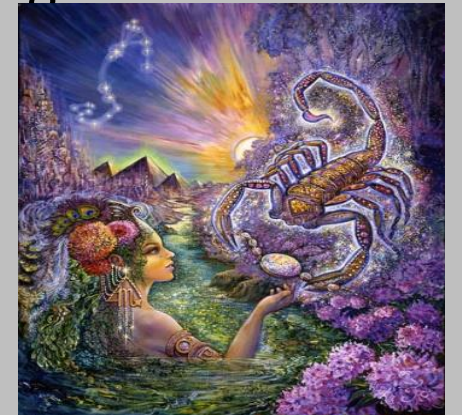




Spiritual Astrology---Pluto

Find Pluto in your chart, the house it rules, where Pluto is placed, the aspects it makes in your natal chart and the house it is transiting now.
Follow the rules of importance in that development.



Side track to the role of Karma in the chart, Pluto showing major karmic condition of transformative and reformatory power.

In astrology, these Trans Saturnian planets, including Saturn, signify the collective karma of the generation in which we were born. Karma in Eastern cultures is the sum of a person's activity – past, present, and future. According to this view, we are each responsible for our own lives and the suffering and joy our behavior brings to us and others. Put simply, karma is the law of cause and effect. It's the consequences of how we direct our energy. This is the biblical notion that we reap what we sow, even if the connection is not immediate or direct. Totally depending on how our natal, progressed and transit charts interact with each other and cycles/timing are very important.



Karma has many different connections in our Spiritual Astrology Study. There are connections from the Saturn, Uranus, Neptune and Pluto aspects. The timing on when and if 'karma' will be resolved is totally up to the transits and a recurrence of the positions in the natal charts..and in the next course I teach in April I will go through these in depth over an 8 to 12 week period. I have experienced these following connections in depth over the last 45 years so here are some simple connections you might make to 'past life' karmic issues around these planets.



The Personal Planets Karmic Conditions Briefly Explained. (Only if aspected by trans Saturnian planets mentioned above)

Sun – Usually karma around the ‘father’, ‘life’s mission’, idea of ‘GOD’.

Moon --- Karma around the mother, family, females and areas of daily habitual life.

Mercury --- Karma around siblings, travel, communication.

Venus – Karma around loved ones, romantic connections, intimate others, and loving nature.

Mars – Karma around sexuality, energy levels, individuality, boundaries.

Jupiter --- I am going to skip this now and will talk later about it as it is very often an over abundance of either positive or negative when aspected.

Karmic Relationships

A KARMIC RELATIONSHIP HAS SOME OF THESE CHARACTERISTICS:

- i. A VERY INTENSE ATTRACTION
- i. AN ADDICTION TO SEX, DRUGS, DRINKING ETC.
- ii. A "BAD GIRL/BOY" PERSONA
- iii. ARGUMENTS & HURTFUL WORDS-RESULTING IN SEX AFTERWARDS
- iv. GIVING UP YOUR INTERESTS
- v. RESTRICTED FINANCIALLY - ALWAYS TAKING FROM YOU
- vi. JEALOUSY (YOU ARE NOT ALLOWED TO HANG OUT BUT THEY ARE)
- vii. ISOLATION (NO CONTACT WITH FRIENDS NO WORK NO FAMILY)
- viii. NAME CALLING (DISRESPECT OF FEELINGS)
- ix. WEIGHT LOSS/GAIN (BOTH FROM SEVERE STRESS!)
- x. CALLING JUST FOR SEX THEN IGNORING YOU (PURELY PHYSICAL)
- xi. LIES (WILL LIE EVEN WHEN CAUGHT!)
- xii. CHEATING (CHEATS WITH YOU, WILL CHEAT ON YOU)
- xiii. OBSESSION(CALLS YOU NON STOP-WATCHES YOU, SMELLS YOUR CLOTHES ETC)
- xiv. BREAKUPS (THEN CRIES OR HAS A DRAMA TO PULL YOU BACK IN)

Saturn --- Karma is around restriction, discipline, older wisdom, boundaries, time control. (each of these has aspects to historical cultures which promoted these types of things such as those who worked for the SS in Germany, the reigning monarchies in restrictive countries in historical presence.)

Uranus – Karma around inventiveness, Atlantis culture, scientific exploration in advanced cultures, higher vibration consciousness. (Planet also connects to the vibratory link to those who follow certain paths out of the orthodox.)

Neptune --- Karma around healing, medicine, channeling guides/masters, cultures that were in the ‘east’ and water cultures, i.e. Islands.

Pluto --- Intense karma around monarchies, rulerships, Egyptian and Sumerian connections, purging/volcanic energies (for example we are going through a Pluto opposition USA Sun in Cancer right now and you can see this in action).

Chiron – Karma around the ‘wound’ of the individual and the wounded warrior/spiritual warrior connection.



Pluto --- **Pluto** which relates to large groups, forces beyond individual control, the internet, the police and anything which is impacting large numbers of living beings all at once. The planet of deep transformation. Pluto involves death, regeneration, and rebirth. It surfaces what has been hidden to destroy, purify, and renew. It rules intense energy, signifying the areas in which we consciously or subconsciously seek to exercise power or control. Linked to our karmic responsibility, Pluto indicates those areas where we need to find the deepest level of understanding. While it can stir up guilt, resentment, obsession, and fear, its rewards are usually positive and life changing.



KEY WORDS FOR PLUTO

transformation, metamorphosis, empowerment, can be ruthless, rebirth, endings and new beginnings, drastic change, upheaval, the path of terror, coercion, force, compulsion, obsession, absorption, domination, that which is hidden, the transmutation of dark into light, elimination, regeneration, destruction (of good or evil), Right Action, indomitable will, mass movements, excavations, depth, aloneness, and strength.

The CHALLENGE of PLUTO is the conscious process of ceasing to conceal parts of yourself from others – to risk exposing that which you fear, if revealed, would surely mean your psychological death.

The GOAL of PLUTO is to experience total self-mastery and fearlessness in any situation. This can only happen when you accept the process of passing through your personal terror for the sake of taking Right Action. The result is transparency and fearlessness.

PLUTO rules the SIGN of Scorpio

PLUTO spends 20 years in each Sign (Pluto's orbit is ecliptic, like an egg, and can be anywhere from 12-31 years in a sign of the zodiac. 20 years is the average)

PLUTO'S POWER AND INFLUENCE in your life can be enhanced with the stones Diamond, Opal, Black Onyx, Agate, and Obsidian.



Pluto traits in people with dominant Pluto in natal chart

Traits and Physical characteristics

Intense

Private

Isolated by choice

Introspective

Magnetic

Obsessive

Compulsive

Provocative

Mysterious

Perplexing

Detached

Loner

Brilliant

Intense gaze

Wounded

Dark dreams/

Nightmares

Sexual

Deep thinkers

Power hungry

Intuition/

Psychic abilities

Aloof

Cerebral appearance/

Medium to small stature

Mystical

Evolutionary Astrology: How Pluto Shows Up

According to Jeff Green, these are the four ways Pluto affects or instigates our evolutionary journeys:

- By producing some emotional shocks in which some behavioral pattern, or life situation is forcefully removed from our lives. (loss)
- By creating a situation in which we forge a relationship to something we perceive we need. (dependency)
- By producing or creating situations in our lives in which we become aware of some external or internal source of stagnation or limitation blocking further growth. (discovery)
- By producing or creating a situation in which we become aware of a new capacity or capability that has become latent or dormant (breakthrough)